

LABOR WORLD

An Injury to One is an Injury to All!

WEDNESDAY VOL. 115
OCTOBER 7, 2009 NO. 8



Plumbers & Steamfitters 11's Drew Smykalski, employed by A.W. Kuettel, guides copper piping over one of two new boilers being installed in the Labor Temple.

Labor Temple getting green system upgrades

There have been a lot of union contractor's trucks outside the Labor Temple lately and there may be more.

Last month the building's boiler, which dated to the 1940s when it was built as a Coca-Cola bottling plant, was removed and two new 2 million BTU hot water boilers were installed. That's just Phase 1 of what may be a three-phase, \$700,000 remodel to make the building more energy efficient.

"The boilers and controls are a \$300,000 project," said

Labor Temple Treasurer Craig Olson. "Johnson Controls engineered the project for us and we expect a 30 percent energy savings along with rebates from Minnesota Power."

Olson said the system is the same as the one being put into Superior's schools after just six years of their old system having been installed.

"Our old system had to be inspected seven days a week, but this state of the art system will all but open the doors for tenants," said Olson.

In the past you would find windows open during the winter in various parts of the building. Summers found energy consuming window air conditioning units in most offices. Many offices also used electric heaters when the old steam boiler was off. When it was on it was impossible to control in some sections of the building.

"We're trying to go green on a lot of things that need to be fixed," said Labor Temple President Jim Stebe. "Minnesota Power is doing an energy audit that will give us a

good idea of where we are and where we need to go."

The Phase 2 bid is for central air conditioning and a new electrical service. That bid is expected this week. If Phase 2 is a go it is expected to be completed by January 1.

Phase 3 would place new enclosures over all the spandrels that define the old window openings in the building. Those panels are incredibly inefficient and have been the source of many leaks--not only air but rainwater. Phase 3 would need to be completed before the next cooling season.

Scalzo, an architectural firm, is designing a mirrored smoked glass exterior cover for those old window openings that will make it look like a modern building said Olson.

The three phases will be an expensive undertaking for the Labor Temple Association, a group of unions that bought the building in 1969, and moved from their downtown location near the current YMCA to London Road.

See Labor Temple...page 7

Senate committee votes no on public option

By Barb Kucera,
Workday editor

MINNEAPOLIS - A handful of U.S. Senators have blocked what a majority of Americans want - a public alternative to private, for-profit health insurance, prompting this one-word comment by the AFL-CIO: "Disgrace."

The Senate Finance Committee September 29 voted down amendments by Democratic Senators Jay Rockefeller and Charles Schumer to include a public option in health reform legislation passed by Congress. Bills passed by the House and other Senate committees already include such a measure.

Three Democrats - Committee Chairman Max Baucus of Montana, Kent Conrad of North Dakota and Blanche Lincoln of Arkansas - joined all the Republicans in opposing both amendments. Rockefeller said the lack of a public option amounts to putting profits first and people second.

A week earlier, a poll by the New York Times/CBS found 65 percent of those surveyed support having the choice of a public option. Schumer said a public option is crucial to provide competition to private insurers - who hold near monopolies in many communities - and keep down costs for everyone.

The Finance committee's

actions make it more likely the Senate will approve a health bill without a public option. However, Democrat Tom Harkin, who replaced the late Edward Kennedy as chair of the Health, Education, Labor and Pensions Committee, believes passage is still possible.

Quoted in the Iowa Independent, he said Senate Majority Leader Harry Reid should include the public plan when the chamber begins to merge the proposals offered by the Harkin-chaired committee and the Finance Committee.

"Those in the minority can offer amendments to take it out, and then we'll see where the votes are," Harkin said. Any bill passed by the Senate

Study says MN health costs will rise 74%

The Robert Wood Johnson Foundation's study *The Cost of Failure to Enact Health Reform: Implications for States* says "in the next ten years out of pocket spending on health care by Minnesota families will increase from the current \$7.2 billion a year to as much as \$12.6 billion, an increase of 74 percent.

Employers' premiums for their workers will increase by as much as 114 percent (page 37 of the report).

"This study drives the point home, reforming our health care system is essential to our nation's continues economic growth and the well being of working families," said Congressman Jim Oberstar. "While the vast majority of Minnesotans have health insurance they are happy with, they also understand that they could lose that coverage if they are laid off from their job, or even if they become seriously ill. Half of all bankruptcies are due to medical bills, in most of those cases the costs were incurred even though the families were insured. Americans need reform now, the cost of doing nothing is simply too high."

Wisconsin families will increase from the current \$7.3 billion a year to as much as \$12.1 billion, an increase of 66 percent. Employers' premiums for their workers will increase by as much as 102 percent (page 63 of the report).

The report by Bowen Garrett, John Holahan, Lan Doan, and Irene Headen can be found at <http://www.rwjf.org/files/research/49148.pdf>

must be reconciled with legislation from the House before going to President Obama for his signature.

In the meantime, progressive organizations are mobilizing to hold Democrats accountable for their votes. A new commercial by the Progressive Campaign Change Committee and Democracy for America targets Finance Committee Chairman Baucus.

It features a young, uninsured father who faces more than \$100,000 in medical bills because of a congenital heart defect.

"Senator Baucus, when you take millions of dollars from health and insurance interests that oppose reform and oppose giving families like mine the choice of a public option, I have to ask: whose side are you on?" asks Bing Perrine of Billings, Mont.



DULUTH CITY COUNCIL

AT-LARGE

**Dan Hartman
Beth Olson**

DISTRICT 2

Patrick Boyle

DISTRICT 4

Kerry Gauthier

SCHOOL BOARD

AT-LARGE

**Mary Cameron
Nancy Nilsen**

DISTRICT 1

Ann Wasson

DISTRICT 4

Laura Condon

**Please Vote
Tuesday, Nov. 3
General Election**

Voting information for Tuesday, November 3

Here is some information concerning the Duluth Municipal and School Board General Election on Tuesday, Nov. 3:

If you have voted in the past four years and not moved or changed your name you are a registered voter.

Voters who mailed in registration cards after the 2002 federal election will be required to show a photo I.D. when voting.

All individuals who intend to **pre-register** to vote on Tuesday, Nov. 3, must return voter registration cards to the City Clerk's office by Tuesday, Oct. 13.

Voter registration cards may be obtained through Oct. 13 from 8:00 a.m. until 4:30 p.m. at the City Clerk's office (Room 330, City Hall, 730-

5500), Fire Halls 2, 4-8, 10, & 11, the Main and all Branch Libraries, or downloaded from <http://www.sos.state.mn.us/index.aspx?page=204>.

To be **eligible to vote** a person must have become 18 years of age on or before Nov. 3, 2009, lived in Minnesota for 20 days (Oct. 13) prior to the election, and been a citizen for 3 months prior to the election (Aug. 3, 2009).

Absentee ballots are available at the Clerk's office (Room 330, City Hall). It will be open Monday-Friday, 8:00 a.m. to 4:30 p.m., Saturday, Oct. 31 from 10:00 a.m. to 3:00 p.m., and Monday, Nov. 2 from 8:00 a.m. to 5:00 p.m.

Individuals voting by absentee ballot or on election day who are not already registered or need to change their address must, at the time of voting, present one of the following **forms of identification**:

- Minnesota driver's license, learner's permit, identification card, or receipt for one, with their current address;

- Tribal ID with their current address;

- If the Minnesota license, Tribal ID, or MN State ID has a former address, you may bring a recent utility to use with your license. Bills can be for electricity, gas, water, solid waste, sewer, telephone or cable TV. The bill must have your name, current address, and be due within 30 days of the election.

- A "Notice of Late Registration" postcard;

- U.S. passport with utility bill

- Prior registration listed on roster at a former address in the same precinct;

- Oath of a registered voter in the same precinct;

- If you are a student, you can use a student ID, registration or fee statement with you current address, a student photo ID with a utility bill, student ID if you are on a student housing list on file at the polling place, or a registered voter in the precinct where you live who will vouch for your residence.

AFSCME gubernatorial debate to be first televised

AFSCME Council 5 will host the first debate between Minnesota gubernatorial candidates that will end up being televised. The debate is Friday, October 9 from 2-4 p.m. during the union's statewide convention at the Duluth Entertainment and Convention Center (DECC). It will be broadcast Saturday, October 10 from 5-7 p.m. on MY 9 (Northland's News Channel 9). It will also be rebroadcast on KBJR-TV (Channel 6, the NBC affiliate in Duluth) and on public access channels statewide. It will be moderated by Barbara Reyelts, news director for the Northland's NewsCenter. The audience will include 900 public and non-profit workers who provide the vital services that sustain quality of life in Minnesota.

All 11 Democrats have confirmed their participation in the debate: Margaret Anderson Kelliher, Tom Bakk, Chris Coleman, Mark Dayton, Matt Entenza, Susan Gaertner, Steve Kelley, John Marty, Tom Rukavina, R.T. Rybak and Paul Thissen. No Republican candidates have accepted the union's invitation to attend the debate.

Council 5 of the American Federation of State, County and Municipal Employees is one of Minnesota's largest and most politically active unions with 43,000 members. The union has a propensity to endorse early and then back its endorsement with feet on the street. On October 24, the union will formally screen the candidates. It's possible that the AFSCME Council 5 board could endorse the day of the screening or shortly after.

Multiple movie nights

Monday, Oct. 19, J. M. Paine Memorial Presbyterian Church, Carlton, 6:30 p.m. social, screening of "Rethink Afghanistan" at 7:00 p.m. with Rep. Bill and Laurie Hilty.

Thursday, Oct. 22, Duluth Labor Temple's Wellstone Hall, 6:00 p.m., "The Wobblies"

Note: The Duluth Labor Movie Night is generally the 4th Thursday of the month, but the holidays will move November to the 3rd Thursday, the 19th, and December to the 18th. The December "movie night" is going to be more of a holiday party with local musicians performing labor ballads.

Correction

In the last Labor World the list of those who donated to make the Labor Day Picnic such a great event again this year, the Grape Vine Cafe was omitted. We regret the error.

Labor backs "Make Jobs Not War" rally

Duluth AFL-CIO Central Labor Body delegates endorsed a "Fund Human Needs, Make Jobs Not War" rally that will take place here as part of a national anti-war day of action.

The Central Body joins two dozen other area organizations and the Northland Anti-War Coalition in the effort. The Iraq War is the first war in U.S. history that the AFL-CIO has opposed.

The Saturday, Oct. 17 event in Duluth will start out with a march at noon from the

Clayton, Jackson, McGhie Memorial (2nd Ave. E. and 1st St.) to the Gerald W. Heaney Federal Building & U.S. Courthouse & Customhouse.

A rally with speakers will commence at the Civic Center when marchers reach that area.

The march was to have begun at the Pickwick but organizers felt the distance needed to be shortened to accommodate all those interested in participating.

While President Obama has declared the war in Afghan-

istan as "the good war" the 8th anniversary of that war was also protested in Duluth with a candle light vigil, march, and sing along with Rachel Kilgour in Canal Park Monday night.

Find out more at www.northlandantiwar.blogspot.com The updated website has a ticker that shows the cost of U.S. wars since 2001. We could have easily paid for national health care by those numbers.

I.U.O.E. Local 70

Monthly Arrowhead Regional Meeting

Tuesday, Oct. 13, 2009, 5:00 P.M.

Duluth Labor Center, Hall B

Dave Monsour, Business Manager, (651) 646-4566

Heat & Frost Insulators Local 49

Notice of Nominations, MSHA

At our next regular meeting, Friday, October 9, 2009 we will accept nominations for financial secretary. The election will be at our Nov. 13, 2009 meeting. If you need an absentee ballot call 218-724-3223.

We will hold an MSHA training class on Friday, Oct. 9 in Freeman Hall ("B") starting at 8:00 a.m.

~Dick Webber, Business Manager

Laborers' Local 1091

Flu shots, Wage allocations, Skill's cards

Our Thursday, Oct. 15 union meeting night will include a number of important events:

Prior to the meeting from 5:00 to 7:00 p.m. we will have a **Flu Shot Clinic**. Please call the union hall at 728-5151 to sign up early. Please bring your membership and MN & WI Laborers Health Cards to the clinic.

At the meeting, which begins at 7 p.m. in the Duluth Labor Temple's Wellstone Hall, we will discuss **Wage Allocations** for next year.

Bob Lyman of the **Employee Assistance Program** will also be at the meeting to discuss their ability to help our members and their families.

Also please remember to return your **Skill's Card** ASAP so we can update our computers.

~Dan Olson, Business Manager

IBEW 31 & 242

Retirees' Luncheon

Tues., Oct. 27

1:00 p.m.

Blackwoods Proctor

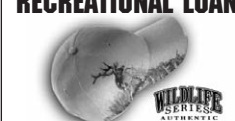
Members & Their Guests Welcome!



Hermantown Federal Credit Union®

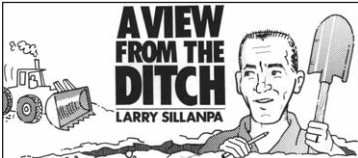
LOW RATES.
FAST APPROVALS.
NO HASSLE
LENDING.

FREE HAT WITH A RECREATIONAL LOAN



218-729-7733 - HERMANTOWNFCU.ORG

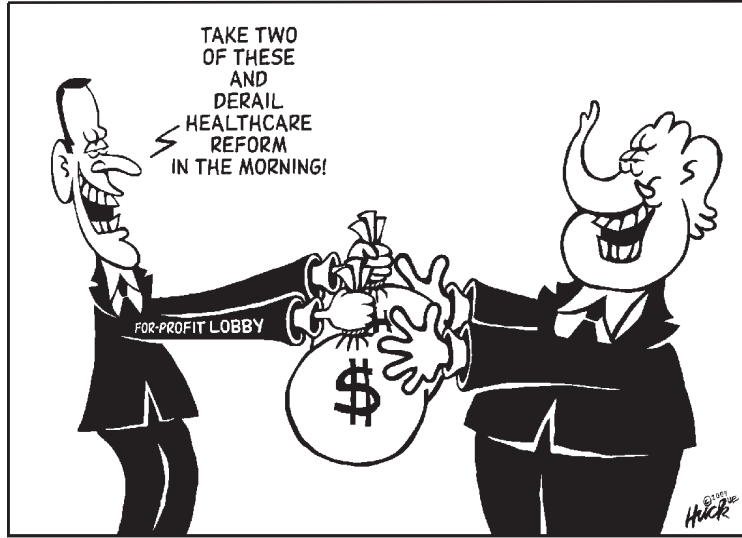
Member eligibility required. Member NCUA.



Let me apologize before the first pitch. This paper, oh, hell, the 463 before it, may not live up to good pamphleteering standards and that's not right considering I get paid for this. I'm sorry, but the Twins and Vikings have needed my good vibes for the past few weeks and so I'm a sports slacker in many other things in my life. I was able to come through for both teams at your expense and things on the home front. If you're not a sports fan I hope you can get over it.

How much fun have the Twins been? They fought their way to a game 163 later today as I write this with a team made up of far too many Triple A caliber players to have done what they did. That franchise has a great Minnesota work ethic doesn't it? I credit former manager Tom Kelly and his disciple Ron Gardenhire for getting the most out of players, getting them to play hard, and creating a culture that even new additions to the roster respect.

Last year and earlier this year I couldn't believe the team ended up with guys like Del-



mon Young and Carlos Gomez, who were so unlike typical Twins players. They played the game recklessly, outside the team concept, and it was hard to watch. They didn't even know how to hit a cut-off man, but they've come around. Now I'm watching Gomez's antics on the bench and enjoying him, especially late in games.

Denard Span came kind of quietly to assume a star role he may have for a long time in a Twins uniform. That's what I had been hoping for from Alexi Casilla but that didn't, and may not come about. Nick Punto does a lot of things right in a game but the team needs a second baseman that has some offense too. The infield roster of Buscher, Casilla, Crede, Harris, Punto, and Tolbert (that Hummingbird can play with his nervous feet) may be a lot different next year. Only Harris and Punto may be left.

It should be defense first as is the Twins style. I'm a big defense guy, even in ping pong. Good hitters fail 70% of the time but busting your butt on "D" will get you rewarded at a much higher percentage. Problem in the pros is to get guys with big paychecks to bust their butts. Way to go Gardy!

And I'll take Orlando Cabrera at short next year too. What a great addition to the club he's been along with relievers Ron Mahay and Jon Rauch and starter Carl Pavano and all those other guys that came late. It's that way for a lot of teams with injuries and poor performances but this Twins roster is a long way from the one that started the year.

And the long ball, where did that come from? Never thought I'd see it in Minnesota. Figured we'd still be talking about Harmon Killebrew's power years from now because we

never found any. Manufacturing runs is a wonderful thing for a baseball purist (DUMP THE DH!) to watch, but you can fatten me up with those long balls all you want. One jack and you're back in the game or it's over. Booyahh!

Yeah, the Twins are going about this without Justin Morneau, a guy I had pegged as a no field, batting practice phenom. It's great to be wrong.

Look at the pitchers we had counted on that aren't around: Kevin Slowey, Pat Neshek, Boof Bonser, and Glen Perkins. That's a lot of innings we had counted on that got filled by others. Hope will spring eternal for pitching in Fort Meyers next spring. Maybe even have some trade bait for a third baseman now that it looks like Joe Crede can't stay healthy. Too bad. I always liked that guy even as a White Sox.

And to think that next year the Twins will be playing on real grass in a brand new outdoor stadium. Fans seated down the lines won't have to turn their heads 30 degrees to see the batter's box. And sunshine, high skies, clouds and rain. This year's World Series could get over the day after the General Election if it goes seven games. That'd be Nov. 4. Baseball, long underwear, stocking caps, and neck gaiters, but the weather can't bother us today even though it's cold and wet. We're Dome again! You can put me out to pasture because my Twins are in game 163 for the second year in a row! I've got myself pumped up for this afternoon's game and I didn't even mention our catcher's name. Tell my bosses that I'm trying not to infect anyone at work with what I've got. If I did, take two and hit to right, then call me in the morning. Play Ball!

9.8% unemployment shows need for more stimulus

by AFL-CIO President Richard Trumka
Workers can go to www.unemploymentlifeline.com for help

The economy shed another 263,000 jobs in September and unemployment rose to 9.8 percent. These numbers are worse than previously forecast and represent the highest unemployment rate in 26 years. There are now six job seekers for each available job and over one-third of the 15 million unemployed workers have now been without a job for over 27 weeks. The only factor that kept the unemployment rate from rising even more is that 571,000 workers dropped out of the labor force last month.

The pace of economic decline and job loss has clearly let up from earlier this year, due in large part to the impact of the American Recovery and Reinvestment Act. However, without further fiscal stimulus, it seems very likely that heavy job losses will continue for several quarters and it will take years for unemployment to fall to pre-recession levels.

The economic crisis is a jobs crisis and there can be no strong and sustainable recovery until employment begins to grow. The Obama administration's aggressive actions have clearly brought us "back from the brink" of what might have been a second Great Depression, but we will need sustained and expanded fiscal support if we are to see a robust recovery.

The Administration and Congress should continue to extend unemployment benefits and bolster aid to budget-constrained states and cities. Further, the Administration must speed public investment in education and training, repairing our nation's deteriorating infrastructure and building a greener economy.



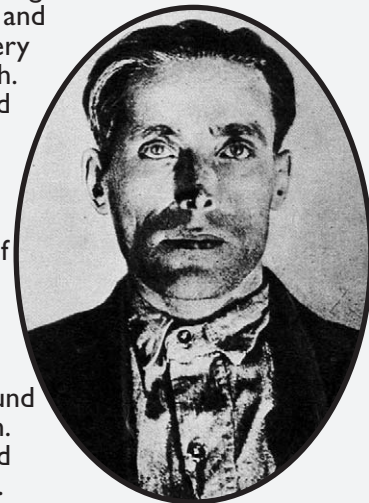
This Day In History from www.workdayminnesota.org

and We Accept the Challenge, A Guide to Duluth's Labor History by Erik Peterson and Richard Hudelson.

October 7, 1879--Joe Hill is born.

Joe Hill was born Joseph Hillstrom in Gavle, Sweden 130 years ago today. He emigrated to the United States, where he became a songwriter, poet and organizer for the Industrial Workers of the World, the "Wobblies." He was convicted of murder on dubious evidence and in 1915 was shot by a firing squad in Utah. His parting words, to IWW co-founder "Big Bill" Haywood, have inspired many in the decades since: "Don't mourn. Organize."

Joe Hill asked to be cremated and have his ashes scattered in every state of the union, except Utah. "I don't want to be found dead in Utah," he said. Some of his ashes were scattered at the Work People's College, which still stands, in the Smithville neighborhood of Duluth. It began as a Finnish Lutheran School in 1903, and later passed into Socialist and eventually IWW control. By 1915, the school enrolled around 150 students, men and women. The college closed in 1940 and became an apartment building.



"Quote, Unquote"

"Work and pray, live on hay, You'll get pie in the sky when you die." ~Joe Hill--The Preacher and the Slave

~NOTICE~

Next issues of Labor World:

Oct. 28; Nov. 11, 24;
Dec. 16; Jan. 6, 20.

LABOR WORLD

(ISSN#0023-6667) is published semi-monthly except one issue in December (23 issues).

The known office of publication is Labor World, 2002 London Road, Room 110, Duluth, MN 55812. Periodicals postage is paid at Duluth MN 55806.

POSTMASTER:

Send address changes to: Labor World, 2002 London Rd., Room 110, Duluth, MN 55812



(218) 728-4469

FAX: (218) 724-1413

laborworld@qwestoffice.net

www.laborworld.org

~ ESTABLISHED 1896 ~

Owned by Unions affiliated with the Duluth AFL-CIO Central Labor Body

Subscriptions: \$22 Annually

Larry Sillanpa, Editor/Manager

Deborah Skoglund, Bookkeeper

Board of Directors

Pres./Treas. Mikael Sundin, Painters & Allied Trades 106; V.P. Paul Iversen, BMWED 1710; Sec. Larry Anderson, Laborers 1091; Al LaFrenier, Workers' United Midwest Bd; Mike Kuitu, Operating Engineers 49; Susan Jussila, MN Nurses; Rick McDonald, IBEW 31; Jayme McKenna, AFSCME 66; Dan O'Neill, Plumbers & Steamfitters 11

Bush chemical exposure rule killed

by Mike Hall, Sep 2, 2009
AFL-CIO Blog

The Bush administration's clandestine move to loosen the rules on how much toxin or dangerous chemicals to which workers can be exposed—and to make it more difficult to issue new worker protection rules—is now officially dead.

The U.S. Department of Labor announced this week that the proposed rule was unnecessary and withdrew it. The rule came to be known as the secret rule because of the Bush administration's attempt to keep it off the public's and media's radar screen last year.

In January, as one of its first official acts, the Obama admin-

istration ordered work halted on the chemical exposure rule and other last-minute regulatory changes the Bush administration tried to ram through before leaving office.

The secret rule could have led to increased exposure of workers to dangerous chemicals and toxins by changing the way worker exposure is measured. The rule was pushed by Bush political appointees over the objections of career health and safety professionals and kept secret until media reports in July 2008 revealed the plan.

When the rule became public knowledge, it unleashed a firestorm of criticism from workplace safety advocates who pointed out that for the

eight years the Bush administration had been in office, it had not developed any significant new worker safety rule—but with the clock running out, the administration was rushing to weaken protections.

Our nation's system for protecting workers from harmful substances that cause injuries, illnesses and deaths is paralyzed. Thousands of workers are exposed every day to chemical compounds and physical hazards that are known to be harmful, yet these exposures are permitted by outdated or non-existent OSHA [Occupational Safety and Health Administration] and MSHA [Mine Safety and Health Administration] standards. This is a sloppy piece of work that will impede, not improve, protection for workers.

Rule on personal protective equipment takes effect Oct. 9

(PAI)--A new Occupational Safety and Health Administration rule spelling out and updating the standards for protective equipment firms must buy for their workers takes effect on Oct. 9.

The new rule covers workers in general industry, shipyards, longshoring, and marine terminals, and spells out requirements for eye-protection, such as goggles, and facial protection devices, plus head and foot protection.

Construction workers are not covered by the new rules -- because OSHA said it lacked the "resources" to do so.

The new OSHA rule for protective equipment for workers says employers "will be able to continue to use the same equipment they have been using to meet their compliance obligation under the existing standards' design-criteria requirements." One difference, which led to the long fight, is that employers will now have to buy the equipment for almost all workers.

Employers will have "increased flexibility in choosing personal protective equipment" (PPE) for workers.

The final fight came over language OSHA proposed that replaced specific references to consensus national standards for protective equipment -- be they boots, protective aprons, goggles or anything else -- with a requirement that the protective equipment be of "good design" and "performance-oriented." The AFL-CIO did not like that at all. The federation "noted the proposal was confusing, that it removed a 'baseline' level of protection from the standards, that the criteria defining a good-design standard were too vague and subjective, and that the proposal could result in less employee protection," OSHA admitted.

UNITE HERE rejoins AFL-CIO

UNITE HERE reaffiliated with the AFL-CIO on the last day of the fed's convention Sept. 17. The 265,000-member union left the AFL-CIO in 2005 to form the Change to Win labor federation along with the Laborers, Teamsters, and Service Employees.

UNITE HERE represents workers in the hospitality, gaming, food service, manufacturing, textile, laundry and airport industries. It has gone through much internal turmoil and disaffiliations in the past year. Sixteen of its councils, including the Midwest Joint Board which has Duluth's Local 99 among its affiliates, withdrew and created Workers United. Three UNITE HERE locals are in the Twin Cities, Rochester, and Northfield, MN.

Pickwick talks next week

The schedules of all parties involved in the contract negotiations between the Pickwick and Workers United Local 99 will be freed enough so negotiations can hopefully resume next week said WU99 President Todd Erickson.

"We sent a letter requesting negotiations start up again and it looks like next week when the Federal Mediation & Conciliation Service representative can meet," said Erickson. Lane Harstad, former president of United Food & Commercial Workers Local 1116 is the mediator.

Erickson said he expects to hear this week about the National Labor Relations Board unfair labor practice charges the union brought against the Pickwick. "They are still negotiating on a few things I guess," he said.

In a September 14 order, the NLRB, in a mailing to Workers United Local 99 and Pickwick owner Chris Wisocki, stated it had found merit in the union's charges. The order consolidated three separate complaints by the union which Pickwick owner Chris Wisocki was to answer in writing to the NLRB by September 28. The order set a court date for October 22 at the Duluth Federal Building.

"We continue to show good faith for negotiations by having pulled our pickets," said Erickson. "We hope for good faith from Chris Wisocki as well."

Erickson said the Pickwick has gotten a lot busier now that the pickets are down.

"We know people have told Chris 'you'd better get a deal with the union, we're here now because there aren't pickets out there,'" Erickson said. "The bar and restaurant have seen a boost and AFSCME has a statewide convention in town this week. Instead of those members being outside on a picket line, many will be inside eating and drinking on their time off."

The Pickwick has been a favorite meeting spot for union functions for decades until Wisocki decided to implement a contract and lock-out Sandy Reinholt and CJ Cannon in July. They went back to work Sept. 21 and 22 after Wisocki ended his lockout against them for picketing and said he would satisfy the NLRB complaint and negotiate.

Now Serving the Iron Range!

When you need Any Type of Glass Work call this area's only **UNION, AUTO GLASS COMPANY!**

We'll handle your insurance claim and do the repair at your site or in our service centers.

But auto glass repair/replacement is only part of what we do. Residential and commercial glass work are a large part of our expanding business.

RESIDENTIAL--Thermopane Replacement--

Storm Sash/ Screen Repair ~Patio Doors ~Glass Tub Enclosures/Shower Doors ~Tables/Desktops ~Glass Beveling ~Mirrors ~Entrance Doors ~Vinyl Replacement Windows~H-Windows ~Glass Handrails/Replacement

COMMERCIAL--Store Front Design/Fabrication

~Besam Entrance Doors ~Automated Door Systems

Serving the area for over 60 years!



Nate Kiminski
Painters & Allied
Trades Local 106

SGI

SUPERIOR GLASS INC.

4911 Matterhorn Drive, Duluth

825 Belknap, Superior

722-7400 ♦ 394-5588

1-888-899-6369

Support your local pharmacy

Tell your union, health fund, and employer you want local pharmacy services

It's Better...Keep It Local!

Your Local White Drug Pharmacy	vs	Mail Order Pharmacies
✓ Personal service		Service only by phone/computer
✓ Consulting at the pharmacy		No personal contact. How do you get questions answered?
✓ Questions answered reliably, accurately		Allegations of re-dispensing product that has been returned
✓ 15 minute service on new prescriptions		No ability to customize orders
✓ Ready Refill™ (Automated Refills) authorizations		Two week delivery, often LATE
✓ Free in town prescription delivery		Do you want your meds sitting in a 110 degree mailbox?
✓ We contact doctors for refills		Some require you to get your own refill authorizations
✓ Monthly health screenings		Why trust your health & safety to a nameless, faceless person?
✓ Free blood pressure checks		

Your local White Drug Pharmacy is more reliable than mail order. We are always available to answer your questions face to face with a local pharmacist. For a listing of locations visit www.thriftywhite.com

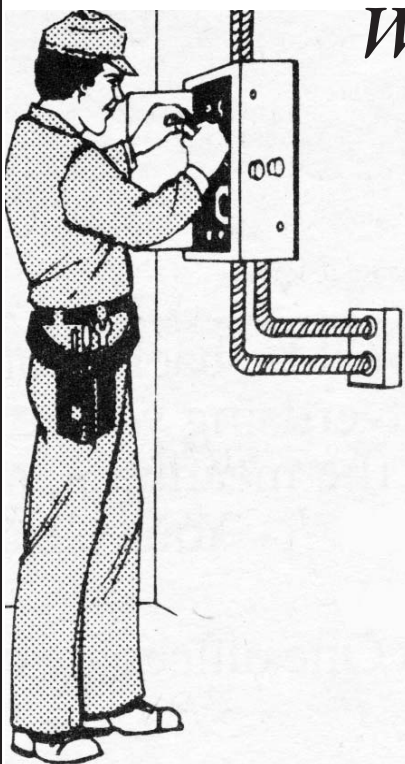


Pinetree Plaza
Inside Super One Foods
Cloquet, MN

218-879-6768 • 1-800-967-3421

Store hours: Mon-Fri 9am - 8pm • Sat 9am - 5:30pm • Sun 11am - 5pm

Our \$100 Rebate has grown!



We've added Air Conditioner and Sump Pump rebates to New, Residential Electrical Service Upgrades, including Dual Fuel and Off Peak!

This Residential Rebate Program is brought to you by the International Brotherhood of Electrical Workers (IBEW) Local 242, in conjunction with their signatory contractors listed below.

IBEW Contractors are the most highly skilled companies working in the electrical industry because they employ the most highly skilled, trained workers. IBEW members are the best because they've gone through 5-year Apprenticeships, learn on the job from fellow union members who are Master Electricians licensed by the State of Minnesota, and because they attend trainings every year, including 16 hours of code classes, to keep up with changes in the electrical industry.

Call one of these contractors today to find out how to save money by upgrading your electrical service, and get a great rebate for making your home more efficient!

TWIN PORTS REGION

- APi Electric...218-628-3323
- Absolute Electrical...218-522-0101
- Agate Electric...218-834-9226
- Bachand Electric...715-392-5580
- Beacon Electric...218-591-7163
- Belknap Electric...715-394-7769
- Benson Electric...715-394-5547
- Bergstrom Electric...715-392-2427
- Dave Twining Electric...218-721-3833
- Duluth Electrical Contracting...218-390-2819
- Electric Builders...218-722-1073
- Electric Systems of Duluth...218-722-0764
- Energy & Air Systems...715-392-9115
- Gilbert Electric...218-729-7874
- Lake City Electric...715-394-3873
- Lakewood Electric...218-525-4388
- Laveau Electric...218-384-4001
- MK Electric...218-624-0836
- Northern States Electric...218-652-4227
- Nylund Electric...218-624-5706

Ask
your union
contractor
about the
PLUS 5
PROGRAM
A 5-year
warranty
on all
residential
work!

Park Electric...218-721-3500

Pine Lake Electric...800-997-5751

Polyphase Electric...218-723-1413

Service Electric...715-392-8771

TM Automation...715-244-3727

Yax Electrical...218-724-8450

BRAINERD AREA

APi of Brainerd...218-829-5859

Electrical Systems of Brainerd...218-825-0549

Hoffmann Electric...218-829-9533

Holden Electric...218-829-4759



Don't Delay, Call Today! This Rebate is valid through 2009!

Obama ruling on tires cheers Steelworkers

PITTSBURGH (PAI)-- Democratic President Barack Obama's decision to invoke a special section of U.S. trade law and impose tariffs for three years on subsidized imported Chinese tires cheered the Steelworkers, who predicted it would save U.S. tire industry jobs.

Obama decided on Sept. 11, and announced late that evening, that he would impose tariffs of 35% the first year, 30% the second year and 25% the third year on the Chinese tires. China's tire exports to the U.S. have quadrupled since 2004, says USW, which represents tire workers nationwide and which marshaled the case for the tariffs.

USW sought quotas on the Chinese tires. But the U.S. International Trade Commis-

sion, which agreed with USW's case that a sudden surge in Chinese tire imports harmed the U.S. industry and cost U.S. workers jobs, recommended tariffs instead, though at higher levels than Obama set.

"It's our union's responsibility to defend our members and to do it in a way that is within the law and that's what we have done," USW President Leo Gerard said. "We're not against trade. We want a level playing field."

"President Obama rightly rejected groundless retaliation threats and imposed relief based on the merits of this case," Gerard continued. Obama, the union leader said, correctly explained that "enforcing trade agreements is part and parcel of maintaining an open and free trading system."

Obama slammed the tariffs on Chinese tires under a special section of U.S. law passed -- during the anti-worker GOP Bush government -- agreeing to China's bid to join the World Trade Organization in 2001.

China agreed that other WTO members, including the U.S., could, within 12 years, "impose safeguard relief on goods from China when imports of those goods increased rapidly and caused injury to domestic industries," USW pointed out. "We are within our complete total 100% right under the safeguard to ask for the remedy that we did," Gerard said.

Though Obama acted under specific law governing trade with China, USW and other unions still say overall U.S. trade law needs a giant rewrite.

Specifically, they support the Trade Act, introduced by Sen. Sherrod Brown, D-Ohio, and Rep. Mike Michaud, D-Maine -- an union member -- to set new standards for U.S. trade negotiators. The standards would require negotiators to include enforceable labor rights and environmental protections in the texts of trade pacts. The Trade Act would also let Congress determine if individual countries met set labor rights standards -- before the U.S. could start talking with those nations. "We need a trade policy that works for American workers as well as multinational corporations and Wall Street," Gerard said.

Buy Union Made Tires

The U.S. Department of Transportation requires that all tires sold in the United States carry a code which shows, among other things, the company and plant that made the tire. The code would look like this: DOT BE XX XXX XXX

The two symbols (either two letters or a letter and a number) which follow "DOT" indicate the company and the plant where a tire was manufactured. For example, the above code indicates a tire made by B. F. Goodrich in Tuscaloosa, AL. The following is a listing of all U.S. and Canadian unionized tire plants and their DOT codes. By comparing this list to the code on the tire you are buying, you can be certain you are getting a tire made by the United Steelworkers of America.

<u>CODE</u>	<u>COMPANY, CITY</u>
BE	B. F. Goodrich, Tuscaloosa, Ala.
BF	B. F. Goodrich, Woodburn, Ind.
VE	Bridgestone/Firestone Des Moines, Iowa
YE	
YU	
8B	
2M	Bridgestone/Firestone Bloomington, Ill.
3M	
D2	Bridgestone/Firestone Lavergne, Tenn.
E3	
W1	
Y7	
2C	Bridgestone/Firestone Morrison, Tenn.
4D	
5D	Cooper Findlay, Ohio
UP	
UT	Cooper, Texarkana, Ark.
JU	Goodyear Medicine Hat, Alberta
PC	
UK	
DY	Denman Tire, Warren, Ohio
JJ	Goodyear Gadsden, Ala.
MD	
PU	
DA	Dunlop, Buffalo, N.Y.
JN	Goodyear Topeka, Kan.
MJ	
PY	
JE	Goodyear Danville, Va.
MC	
PT	
JT	Goodyear Union City, Tenn.
MK	
TA	
JF	Kelly-Springfield Fayetteville, N.C.
MM	
PJ	
CC	Yokohama Tire, Salem, Va.

In addition to company brands, these codes also appear on "Associate Brand" and "Private Brand" tires manufactured at the above plants. The key to being sure of getting a USW-made tire is the DOT code. Be sure and check it with this listing.

Fed charters Veterans Council

by James Parks, Sep 15, 2009

Recognizing the service of the millions of veterans in the union movement, the AFL-CIO at its convention on Sept. 15 voted to add the Union Veterans Council as the seventh AFL-CIO constituency group.

American Federation of Musicians of the United States and Canada (AFM) President Thomas Lee, a Marine Corps veteran, said the establishment of the constituency group will bring together union members who are veterans to speak out on veterans issues and support the appointment of labor-friendly veterans to government agencies.

J. David Cox, secretary-treasurer of AFGU and a former VA nurse, said we owe our freedoms to those veterans who protected our freedoms.

The other AFL-CIO Constituency Groups are the Asian Pacific American Labor Alliance, A. Philip Randolph Institute, Coalition of Black Trade Unionists, Coalition of Labor Union Women, Labor Council for Latin American Advancement, and Pride At Work.

LUNG CANCER & MESOTHELIOMA

U.S. bankruptcy judges have set over \$30 billion dollars to pay to present and future asbestos claimants. In order to qualify claimants must have been diagnosed with **mesothelioma, a lung cancer or lung disease** after 1997*.

If you've worked with asbestos or taconite and you've developed a lung condition, you may qualify for financial compensation. If you would like to see if you qualify for asbestos compensation, give us a call for a free, confidential consultation.

*Good till only 1/2010, for example specifically Babcock & Wilcox, under Bankruptcy Court rules.

Cascino Vaughan Law Offices, Ltd.

"Representing asbestos victims since 1986"

Toll Free: 1-800-783-0082

Local: 414-226-0241

www.dairylandlaw.com



Allen D. Vaughan, Esq., Michael P. Cascino, Esq.
1110 N Old World Third Street Suite 405
Milwaukee, WI 53203



Summer Hours: M-Sat 11-10

Grape Vine
Café
Greek Cuisine

of GR LLC

220 W. Superior Street
Duluth, MN 55802
Tel: 218-464-4027
Local Union Family Owned & Operated

Here's what will get you denied by United HealthCare and its companies

In an article on page 12 of the last Labor World there was a reference made to a PacifiCare document that defines who should be denied coverage. PacifiCare is part of the United HealthCare Group.

Here is part of what was covered in their 2003 "Individual Plan, Medical Underwriting Guidelines."

Ineligible Occupations

Air traffic controllers
Asbestos/toxic chemical
Athletes-semi-pro, pro
Circus, carnival workers
Crop dusters
Dock workers
Deep-sea fishermen
Drivers (racing, testing)
Explosives workers
Firefighters
Flight instructors
Jockeys
Loggers or lumber industry

Migrant workers
Off shore oil workers
Police officers
Pyrotechnician
Quarry workers
Riggers
Rodeo performers
Salvage, rescue divers
Ski patrol
Structural steel, iron workers, steeplejacks
Stunt, test pilots
Stunt person
Tunnel workers
Underground miners
War correspondents
Window workers over three stories high

Labor Temple gets green...from page 1

"We've been worried about that old boiler failing for many years," said Olson. "The commercial loan rates are at an unprecedented low, construction costs are down, and we had to do something to make the building sound. The timing is right."

Stebe said the Labor Temple has over 30 renters and they will all benefit from the changes.

"We're at nearly full capacity on our rental space and a lot of the renters have been here for 40 years," Stebe said. "We owe it to them to bring the Labor Temple into the modern era."

Stebe said unions bought the building in 1969 for \$300,000 and it has been valued at over \$2,000,000 today even before the remodeling projects.

Much of the original remodeling was done using volunteer labor. Freeman Hall ("B") is named for Jerry Freeman, business manager of Laborers Local 1091 who died volunteering on the project.

The LTA has gone through many tough periods financially as its board of directors has tried to keep rents as low as possible. In the past many of the upgrades done to the building, such as the leaking windows and the air handling system, were performed with finances controlling the quality of the materials and/or systems purchased. For example, the air handling system for Wellstone Hall takes up an inordinate amount of space in the parking lot and is so noisy it's difficult to conduct meetings or events when it kicks in.

This time, the board has decided it has to be done right with state of the art systems.

"We're going to get a good return on our investment," said Stebe, "but more importantly, we're going to make sure that the House of Labor in Duluth is here for a long time."

Recommended diagnostic tests have not been completed.

The document ended with a paragraph on Rescission that explained to their staff how all applications would be inspect-

ed by PacifiCare's underwriting department to look for anything that could result in a policy being rescinded.

**INTERSTATE
SPUR**



**2700 W. Michigan St.
GAS - DIESEL
GROCERIES
You'll really like
our car wash!**



**In the Labor Temple!
Walk-in Service meets
Quality Cutting Edge!
Call Keith 464-4247**

for Duluth School Board
District 4

Laura Condon

**An Experienced School Board Member
An Experienced Union Member**



You can be assured I'll continue to keep working families' issues close at hand as I work to improve our school district for all our students. I always have.

Please vote Tues., Nov. 3

Paid for by Duluth AFL-CIO Central Labor Body COPE

STAY AWAY FROM FALLEN POWER LINES

Storms, high winds, falling trees and accidents can cause downed power lines. These lines can be fatal or cause life-threatening injuries if you come in contact with them. Do not go near them. Do not drive over them in a vehicle. Do not attempt to move trees, equipment or vehicles that have come in contact with these downed lines.

The only safe course of action is to call 911.



AN ALLETE COMPANY

**DIAL 811 Gopher State One Call
Damage Prevention Center**



A SAFETY MESSAGE FROM MINNESOTA POWER.



Cash for Clunkers!
We don't need a bailout... it's for charity!
Bring in your old frames for:

\$15 OFF

Your total purchase of regular priced eyeglasses of \$99 or more*

\$50 OFF

Your total purchase of regular priced eyeglasses of \$199 or more*

\$75 OFF

Your total purchase of regular priced eyeglasses of \$299 or more*

**All old frames
will be donated to
the local Lion's Club!**

**Duluth • Superior • Aurora • Two Harbors
Grand Rapids • Cloquet • Moose Lake**

*Offer ends October 31, 2009. Cannot be combined with any other offer or prior purchase. See store for details.



Beth Peterson

Beth Peterson selected as Community Services Director

A joint committee of the United Way of Greater Duluth and the Duluth AFL-CIO Central Labor Body selected Beth Peterson as the new director of their Community Service Program on September 16. The appointment followed interviews that were conducted that day to fill the position vacated by the recent retirement of Yvonne Harvey.

Peterson's first day on the job was Monday, October 5.

"We are happy to have selected a strong advocate for working families to fill this important position," said Central Body President Alan Net-

land. "We feel confident that Beth will do a great job and look forward to working with her."

A member of AFSCME Local 3801 that represents UMD Clerical & Technical Employees, Peterson has been an active member of the Community Services Committee and was instrumental in her union starting their own such committee.

"When we were on strike in 2003 and 2007 our members received an incredible amount of help from Yvonne and the program," Peterson said. "In 2007 it was really difficult

because we hadn't expected to have a strike, but there was Yvonne, calm, cool, and empathetic, meeting with our members one on one, helping with problems and telling us 'it'll be okay, the program will help,' and it did."

Peterson said many of her 300 co-workers were living paycheck to paycheck and the two strikes, which were necessary to protect their contract, were devastating.

"Many of us hadn't recovered from the first strike, and later when we shared experiences we found out how many had quietly received help from the Community Services Program," said Peterson. "We decided we needed to give back for the help we received, and so I'm really excited about being named to follow in Yvonne's footsteps."

Peterson said her AFSCME Local 3801 created a Members Services and Community Outreach Committee to give back without a dime to give.

"We started having fundraisers, gave up stipends, had rummage sales, food collections, sold candles and anything else we could do to help UMD students, staff, faculty, and organizations who had helped us. Then we started looking at the community at large to give our service to."

Peterson was recognized at this spring's Joe Wiesinger Community Services Awards Banquet with a Director's Award for her outstanding volunteer work in helping others.

"That award was really for everyone on our union's Outreach Committee," said Peterson.

She and some of her co-workers also decided to become more active in the labor movement because of the solidarity shown them by area unions during their strikes.

"We became delegates to the Duluth Central Body and joined the Community Services Committee," Peterson said. "We had taken financial losses from the strikes but the solidarity was a huge thing to be able to take away from those strikes."

Peterson had worked at UMD for 24 years. Her last job was in the Outdoor Program which she said gave her the skills to be able to be selected for the Community Services position.

"Director Ken Gilbertson and everyone I worked with at UMD had a huge influence on my development and I'm grateful," Peterson said.

She has a B.A. Degree from UMD in Communications and is currently working on a Masters in Advocacy and Political Leadership. As part of her MAPL track she was an intern for the Community Services Program this summer.

On Monday she was in her new office trying to figure out how to upgrade the computer and telephone systems. Staring her in the face are the United Way's Campaign, the holiday food and gift programs, trainings for herself and trainings she has to give to others, and calls for assistance from people needing help in these difficult times.

"I've been looking forward to getting to a clean starting point, but I think we're off and running before that could happen," she said.

"Beth has been a committed member of our Community Services Committee and she'll make a great director," said Todd Erickson committee chair.

You can call Beth Peterson and the Community Services Program at 728-1779. When she gets her computer up her email will be bpeterson@unitedwayduluth.org.

AFL-CIO Joe Wiesinger 2009 Community Services Employer Award Winner:

Falsani, Balmer, Peterson, Quinn & Beyer Law Firm



(Left-to-right) Firm partners, Sean Quinn and Jim Peterson, receive award from Al Netland

According to the AFL-CIO Central Labor Body's Community Services Program, here's why:

"Falsani, Balmer, Peterson, Quinn & Beyer has a long history of supporting the United Way of Greater Duluth, DADs Golf Tournament, the Duluth AFL-CIO Annual Labor Day Picnic (they not only pay for the sweet corn, the lawyers attend the picnic and serve the corn to the picnic goers); they sponsor a free Worker's Compensation Seminar every year, as well as, many other labor-related projects.

Individuals at the firm also donate their time and talents to our community, helping in many ways:

- The Homeless Connect Program
- Safe Haven Women's Shelter
- The Women's Expo
- Lawyers-On-Line
- Youth Coaching
- Pro Bono Work

And Much, Much More

There is not enough room on this page to put into words the true extent that FBPQ&B and its employees give back to their community. Therefore, let it be said that the FBPQ&B Law Firm truly embodies the Spirit of Community and knows the true meaning of Community Service."

Need to chew on it a bit?

Some issues you may encounter at your meetings may be so difficult that you'll need to chew on them a bit. There's no better way to get to good decisions than ordering from T-Bonz to make your meetings work.



2531 West Superior St. 727-0020 Grill

Call for help in setting up your party!

Happy Hour M-F 3-6, \$1 off Drinks, 1/2 off Apps

Oh yah, we deliver!